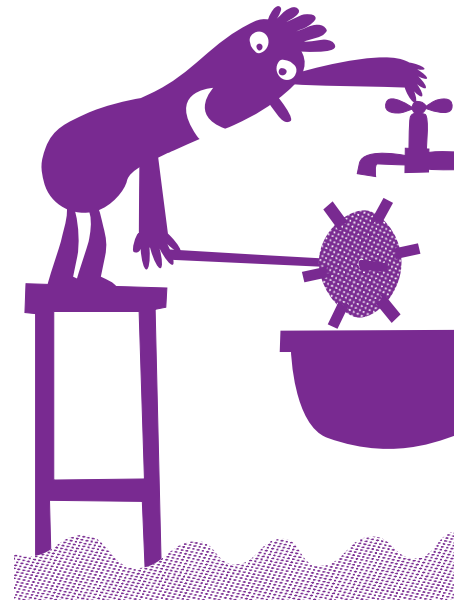


How to build a waterwheel

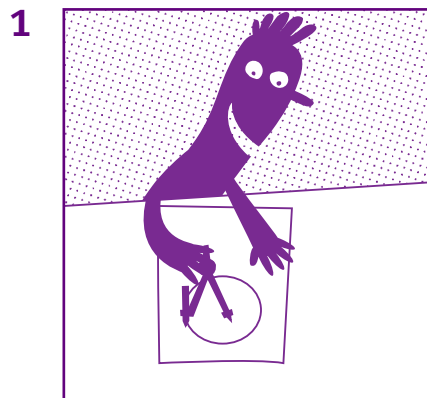
You will need:

- Cardboard
- Wood or plastic
- Compass

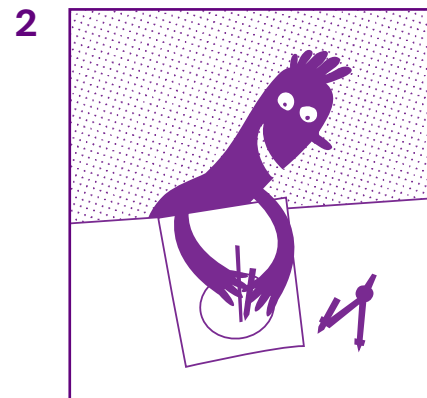
Ideally a waterwheel should be made with a material like wood or plastic that will not go soggy and floppy in water. But, as these need to be cut out with hacksaws or very sharp knives, it is much safer if models are made with cardboard—though they will soon disintegrate when used in water.



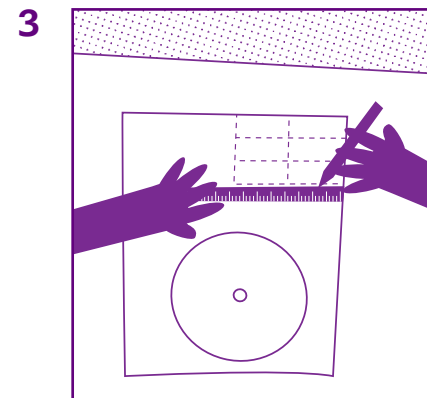
How to



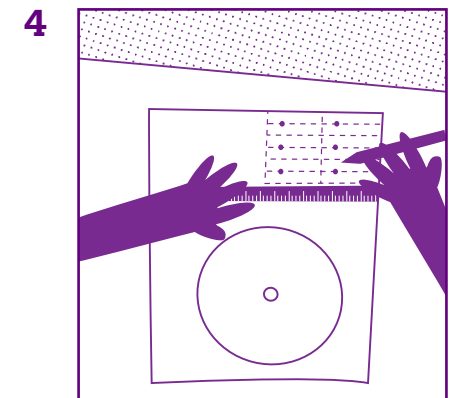
Draw a circle with a radius of 4cm on a piece of cardboard using a compass.



Put a rod or pencil on the centre point made by the compass and draw around this rod/pencil.

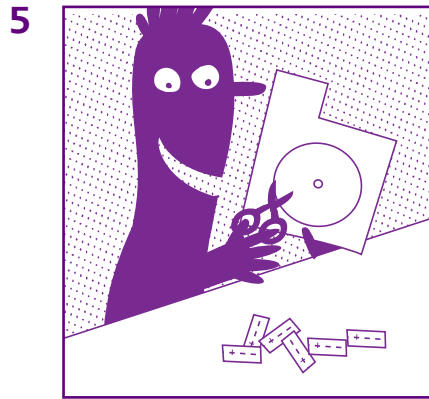


Draw six rectangles on some cardboard, each measuring approximately 3cm x 4cm.

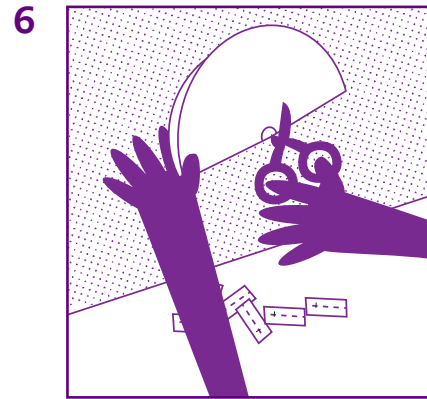


Draw a line up the middle of each rectangle and mark it 2cm from one end.

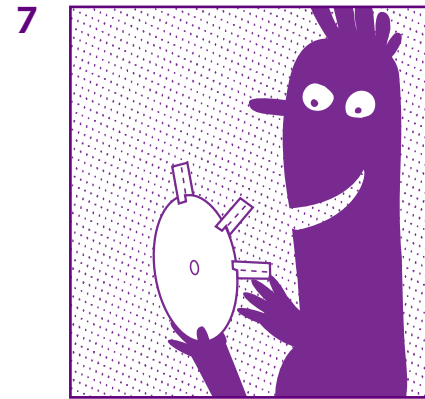
How to continued



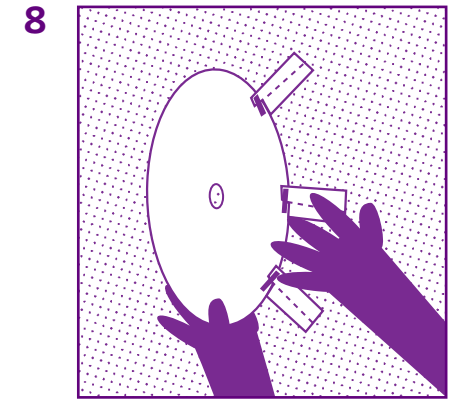
Cut out the circle and the rectangles.



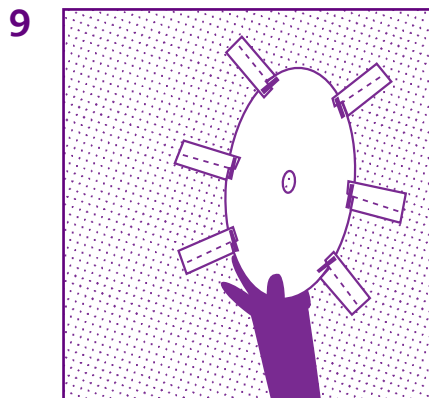
Cut out the centre hole of the circle and cut along the centre line of each rectangle as far as the mark.



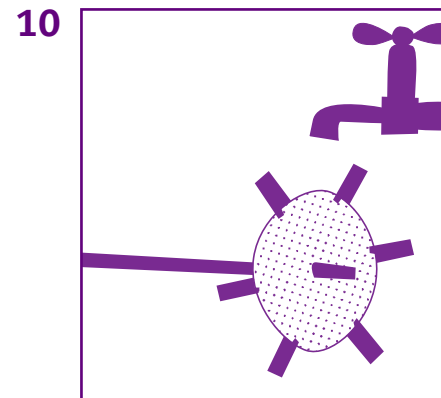
Slide the circle through the slit of a rectangle.



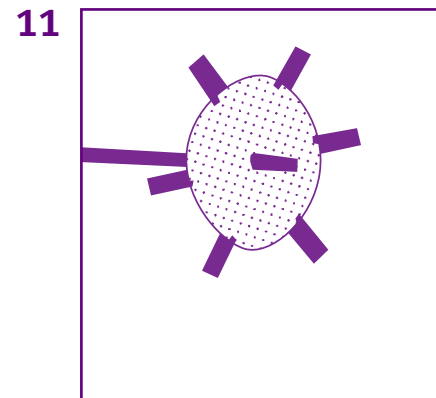
Secure in position with sticky tape.



Repeat with the other 5 rectangles until you have a wheel with 6 blades



Slide the rod through the centre of the wheel and hold it in a stream of flowing water. Try it under water falling from above...



... and with water rushing underneath.