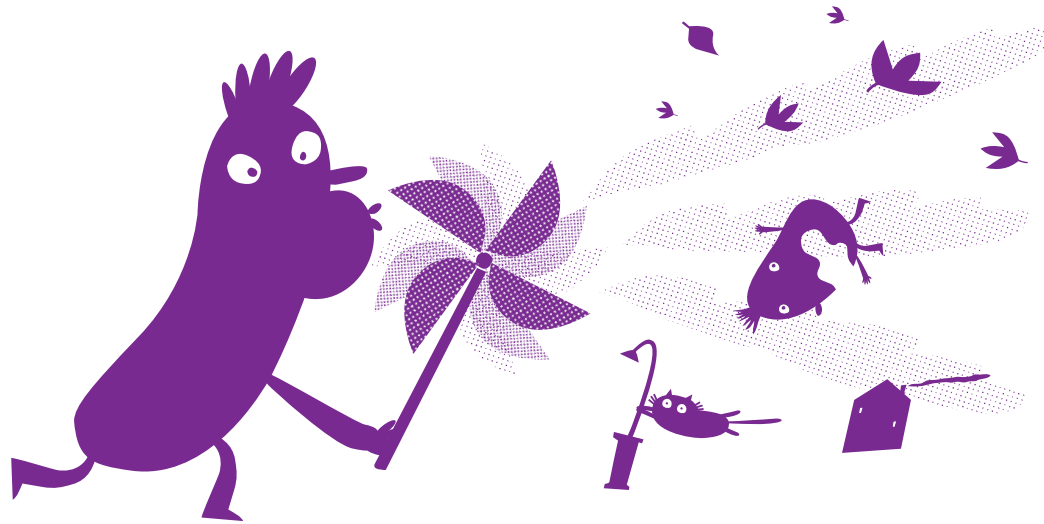


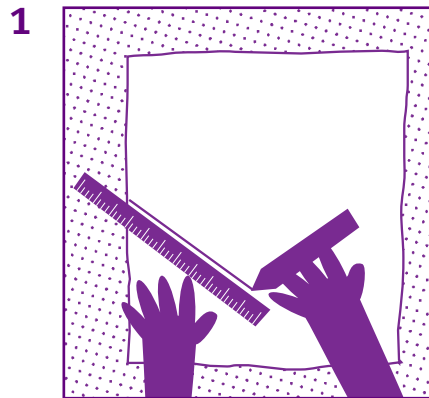
How to make a windmill

You will need:

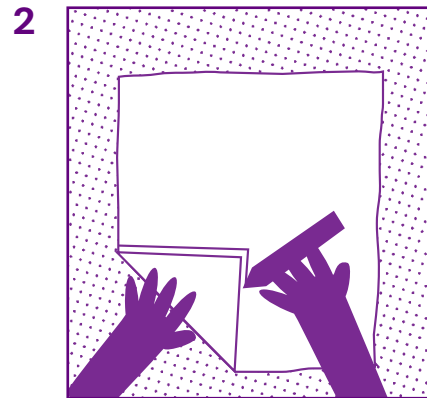
- A sheet of paper
- A pencil
- Scissors
- A ruler
- Drawing pins



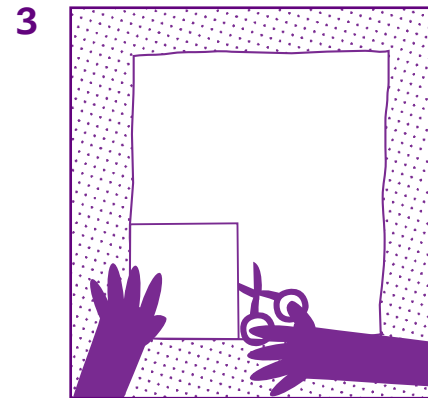
How to



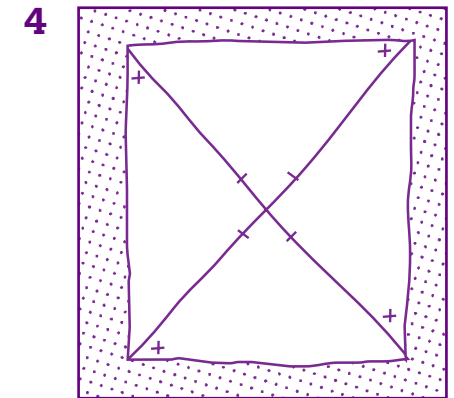
Get a piece of paper and make one mark 14cm up from one corner and another 14cm along from the corner. Then draw a line between the marks.



Fold the paper along the line. Then trace the outline of the corner onto the paper.

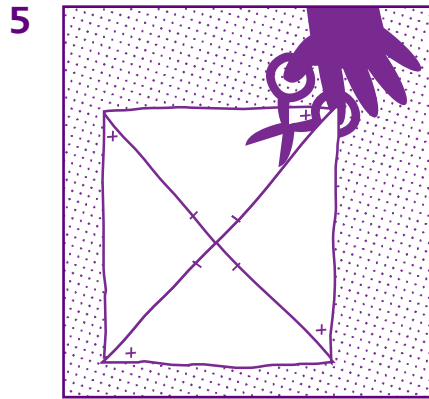


When you open out the paper you will have a square. Cut this square out.

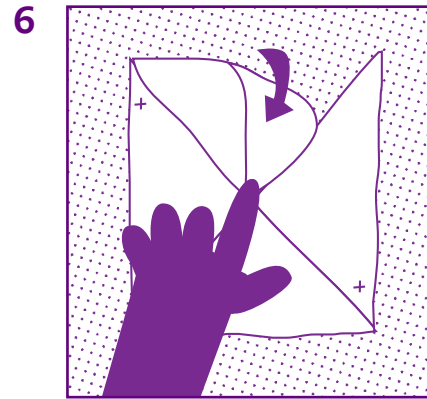


Draw two diagonal lines on the paper so that you have a cross shape. Mark a point on each line 2cm from the crossover. Finally, on the right-hand side of each diagonal line, make a mark like a cross. NB. If you want to decorate your windmill do so now.

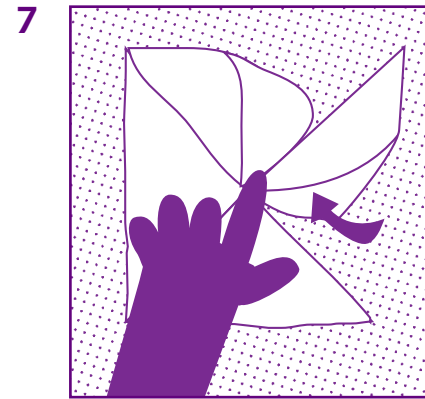
How to continued



Cut along each line until you reach the 2cm mark.



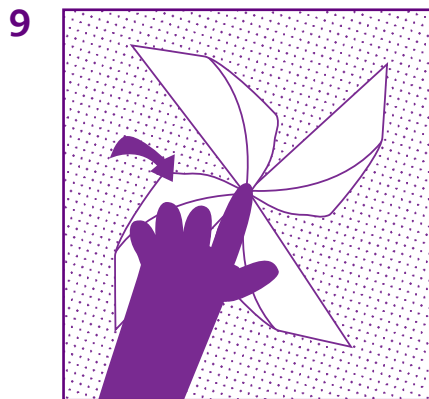
Bend a corner towards the centre.



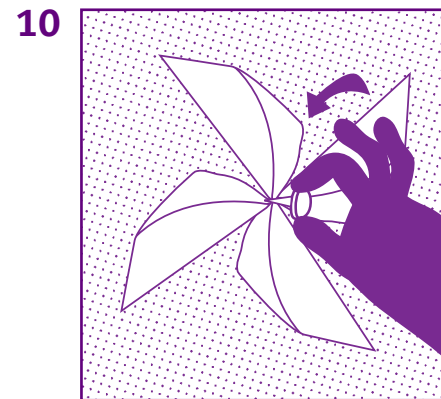
Bend a second corner and...



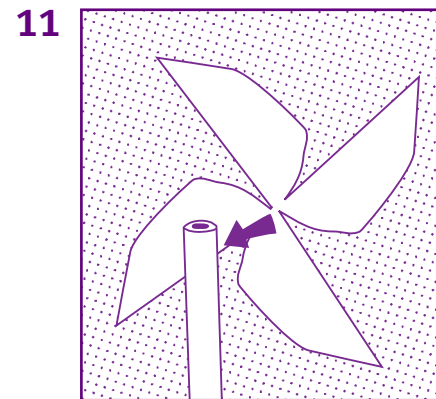
... a third corner...



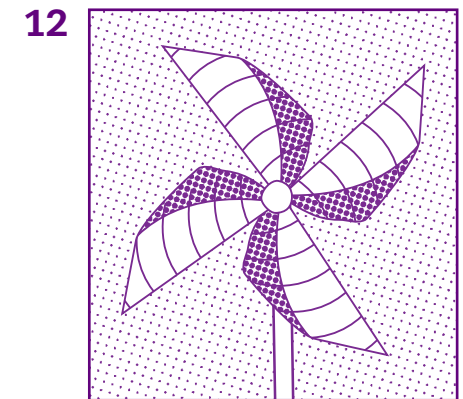
... and the fourth corner towards the centre.



Carefully put a pin through the four corners and the centre of the paper



Put the pin into something like a rubber or pencil. You may need to push it into place with another rubber as the pin head can dig into your fingers.



You can change the size of your windmill but big ones won't work well.